

WUO(4)-F

KAWAMOTO SUBMERSIBLE PUMP

2 POLES / 50 Hz

SIZE 40 ~ 80 MM



VORTEX IMPELLER



APPLICATIONS AND FEATURES

■ APPLICATIONS

- For drainage of sewage and wastewater, and for drainage of septic tank pump.

■ FEATURES

- Light weight and easy-to-handle submersible sewage pump.
- Stainless steel made frame motor and plastic parts increase operating life.
- Use glass fiber reinforced plastic for the impeller and casing, and equipped with a motor with built-in auto-cut having a large starting torque for stable operation.
- Vortex type and excellent performance to pass foreign objects.
- Can be combined with a plastic pedestal support. (special accessory)
- Starting/stopping water levels are adjustable in L and LN types.

STANDARD SPECIFICATIONS

Description		Model : WUO(4)-F
Applicable Liquid		Waste water, filthy water and other miscellaneous dirty water
Liquid Temperature		0~40 °C
pH		5~9
Main Pump	Casing	Glass fiber reinforced resin
	Impeller	Glass fiber reinforced resin
	Shaft	Stainless Steel (SUS403)
Motor	Speed	3000 rpm
	Protection	IP68, Class F
Construction	Impeller	Vortex type
	Shaft Seal	Double mechanical seal Pump : Sic x Sic Motor : Ceramics x Carbon
	Motor Bearing	Sealed ball bearing
Maximum Submergence		0.15~0.75 kW : 5 m. 1.5~3.7 kW : 8 m.

OPTIONAL SPECIFICATIONS

Description		Model : WUO(4)-F
Applicable Liquid		Waste water, filthy water and other miscellaneous dirty water
Liquid Temperature		0~60 °C
pH		5~9
Main Pump	Casing	Glass fiber reinforced resin
	Impeller	Glass fiber reinforced resin
	Shaft	Stainless Steel (SUS403)
Motor	Speed	3000 rpm
	Protection	IP68, Class F
Construction	Impeller	Vortex type
	Shaft Seal Oil	Double mechanical seal Pump : Sic x Sic Motor : Ceramics x Carbon White oil
	Motor Bearing	Sealed ball bearing
Cable length(m)		10m, 20m, 30m, 40m

SOLID PASSAGE

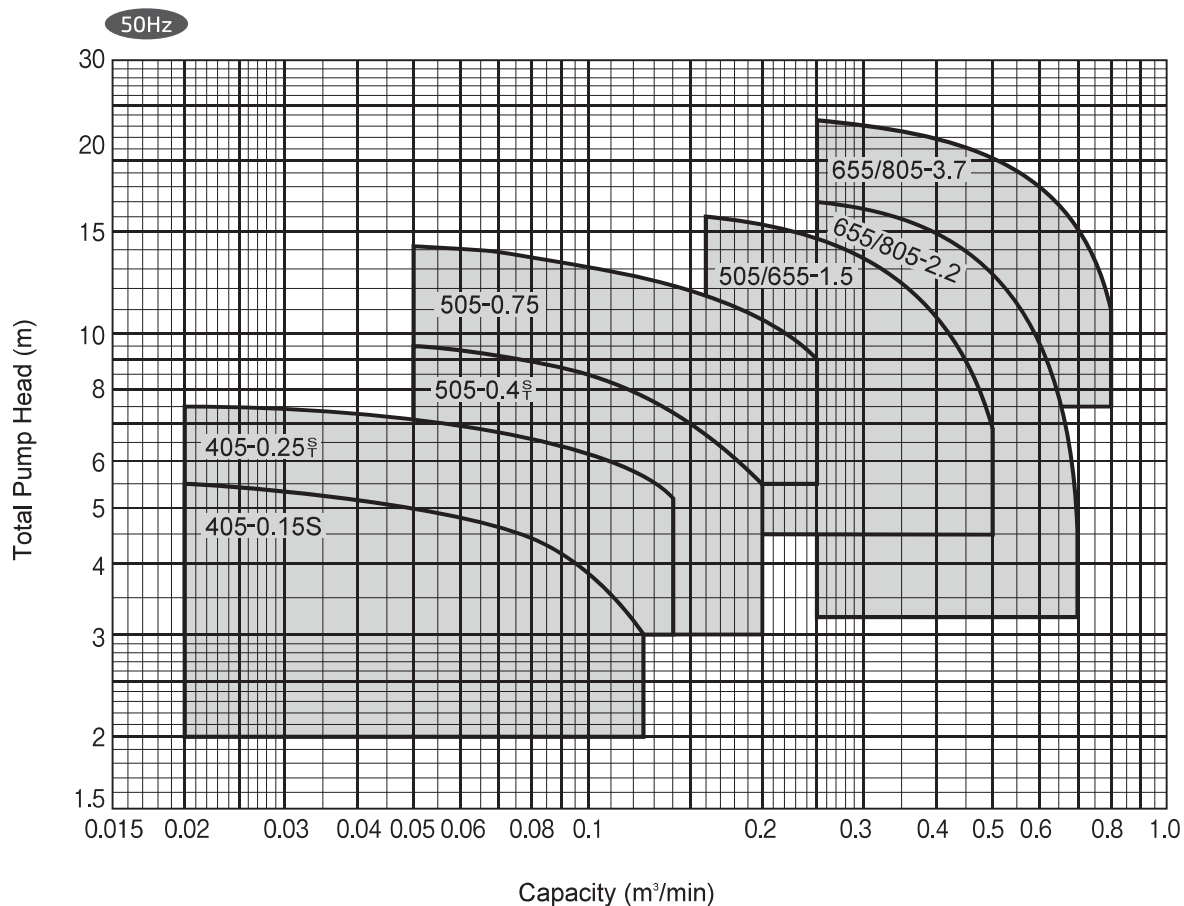
Pump Bore (mm)	Solid diameter (mm)	Clothes
40	35	-
50	35	-
65	40	-
80	40	-

CABLE

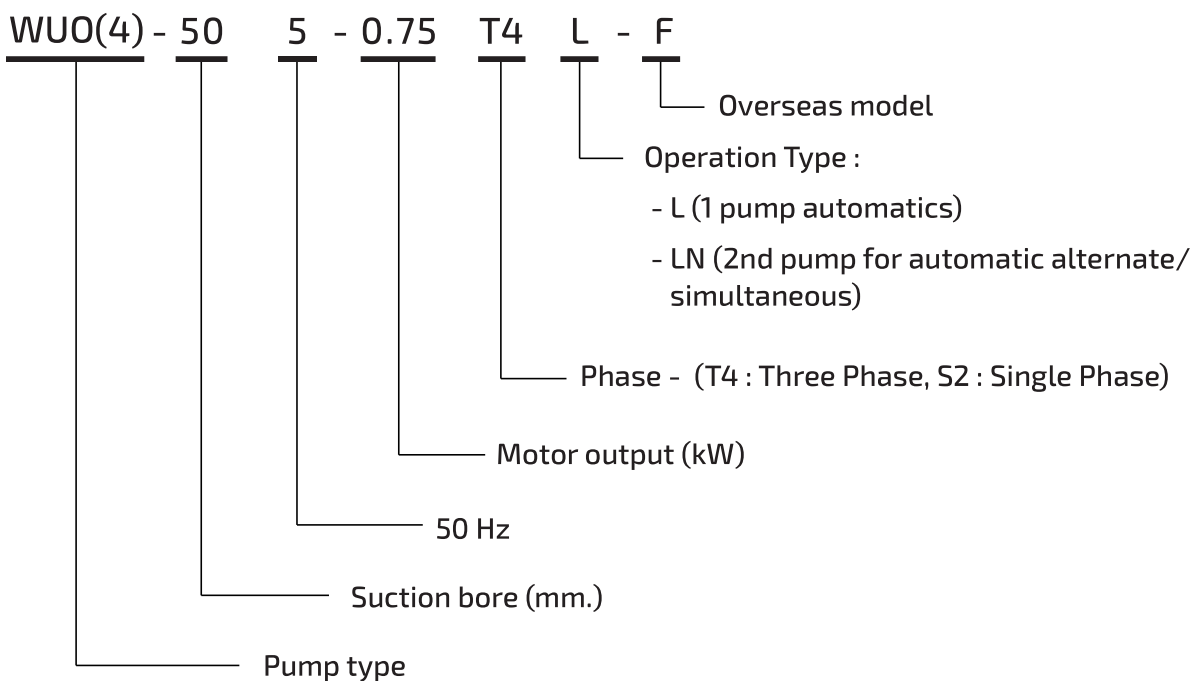
Output (kW)	Phase	Size (mm ²)	Core	Outer diameter (mm)	Length (m)
0.15	1	0.75	3	9.2	6
0.25	1	0.75	3	9.2	6
0.25	3	0.75	4	9.9	6
0.4	1	0.75	3	9.2	6
0.4	3	0.75	4	9.9	6
0.75	3	1.25	4	11	6
1.5	3	1.25	4	11	10
2.2	3	1.25	4	11	10
3.7	3	2	4	11.7	10

Cable Material : 600V insulating (VCT)

PERFORMANCE CHART



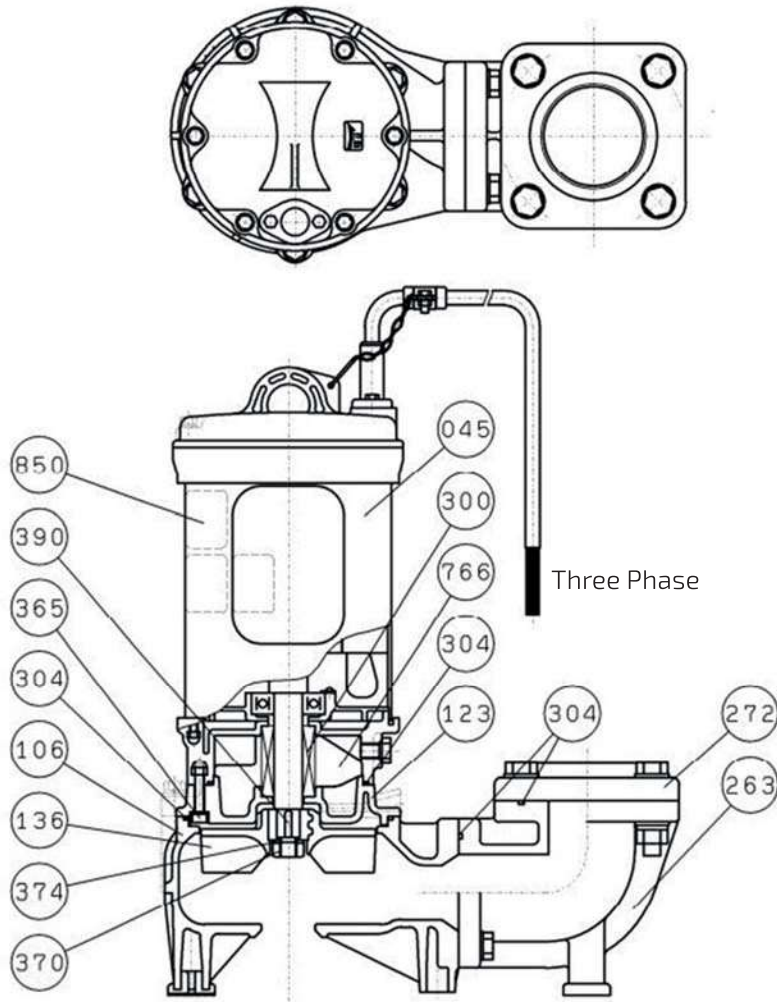
MODEL CODE



SPECIFICATION TABLE - WUO-F

No.	Bore (mm)	Model	Motor (kW)	Performance			
				Capacity (m ³ /min)	Total Head (m)	Capacity (m ³ /min)	Total Head (m)
1	40	WUO4-405-0.15S2-F	0.15	0.02	5.5	0.125	3
2		WUO4-405-0.25S2-F	0.25	0.02	7.5	0.14	5.2
3		WUO4-405-0.25T4-F	0.25	0.02	7.5	0.14	5.2
4	50	WUO4-505-0.4S2-F	0.4	0.05	9.5	0.2	5.5
5		WUO4-505-0.4T4-F	0.4	0.05	9.5	0.2	5.5
6		WUO4-505-0.75S2-F	0.75	0.05	14.2	0.25	9
7		WUO4-505-0.75T4-F	0.75	0.05	14.2	0.25	9
8		WUO-505-1.5T4-F	1.5	0.16	16	0.32	13.2
9	65	WUO-655-1.5T4-F	1.5	0.25	14.5	0.5	6.8
10		WUO-655-2.2T4-F	2.2	0.25	17	0.5	12.8
11		WUO-655-3.7T4-F	3.7	0.25	23.5	0.5	20.2
12	80	WUO-805-2.2T4-F	2.2	0.36	15.5	0.7	4.8
13		WUO-805-3.7T4-F	3.7	0.4	21.5	0.8	11.2
14	40	WUO4-405-0.15S2L(LN)-F	0.15	0.02	5.5	0.125	3
15		WUO4-405-0.25S2L(LN)-F	0.25	0.02	7.5	0.14	5.2
16		WUO4-405-0.25T4L(LN)-F	0.25	0.02	7.5	0.14	5.2
17	50	WUO4-505-0.4S2L(LN)-F	0.4	0.05	9.5	0.2	5.5
18		WUO4-505-0.4T4L(LN)-F	0.4	0.05	9.5	0.2	5.5
19		WUO4-505-0.75S2L(LN)-F	0.75	0.05	14.2	0.25	9
20		WUO4-505-0.75T4L(LN)-F	0.75	0.05	14.2	0.25	9
21		WUO-505-1.5T4L(LN)-F	1.5	0.16	16	0.32	13.2
22	65	WUO-655-1.5T4L(LN)-F	1.5	0.25	14.5	0.5	6.8
23		WUO-655-2.2T4L(LN)-F	2.2	0.25	17	0.5	12.8
24		WUO-655-3.7T4L(LN)-F	3.7	0.25	23.5	0.5	20.2
25	80	WUO-805-2.2T4L(LN)-F	2.2	0.36	15.5	0.7	4.8
26		WUO-805-3.7T4L(LN)-F	3.7	0.4	21.5	0.8	11.2

SECTION VIEW - MORE THAN 1.5kW

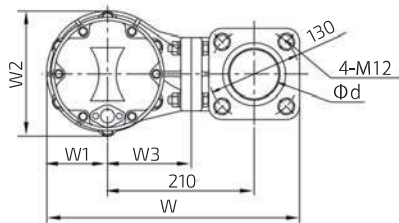


No.	Part Name	Material	Note
45	Motor	-	Class F
106	Casing	Resin	
123	Casing cover	Resin	
136	Impeller	Resin	
263	Discharge elbow	Resin	
272	Square flange	Resin	
300	Mechanical seal	-	

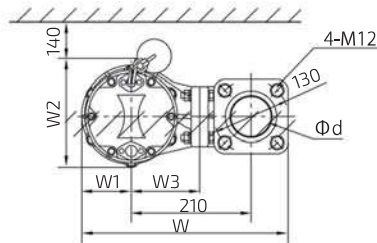
No.	Part Name	Material	Note
304	O-Ring	Rubber (NBR)	
365	Bolt	SUS304	JIS G 4303
370	Impeller nut	SUS304	JIS G 4303
374	Gear washer	SUS304-CS	JIS G 4303
390	Key	SUS403	JIS G 4303
766	Turbine oil	VG32	
850	Caution label	-	

PUMP DIMENSION - FLANGE TYPE MORE THAN 1.5kW

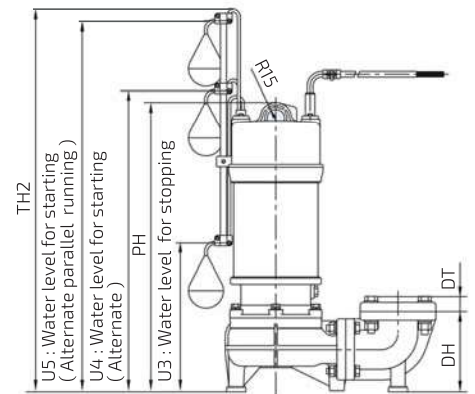
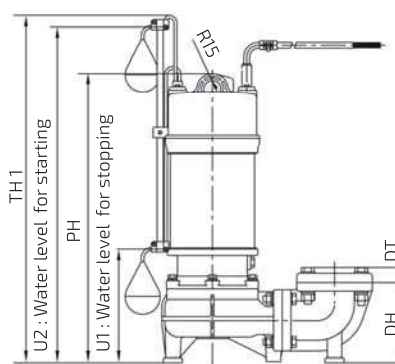
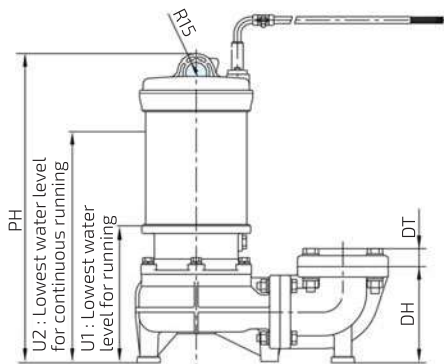
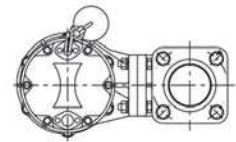
WUO-F



WUO-L-F



WUO-LN-F



Operation Method	Discharge Bore (mm)	Model	Motor (kW)	Power Source (V)	Pump									Water Level					Weight (kg)
					PH	TH1	TH2	DH	W	W1	W2	W3	DT	U1	U2	U3	U4	U5	
Non Automatic	50	WUO-505-1.5T4-F	1.5	200	442	600	660	137	362	87	179	120	26	195	330	-	-	-	15.5
	65	WUO-655-1.5T4-F	1.5	200	442	600	660	137	362	87	179	120	26	195	330	-	-	-	15.5
		WUO-655-2.2T4-F	2.2	200	514	750	810	160	372	97	216	130	26	195	400	-	-	-	20
		WUO-655-3.7T4-F	3.7	200	551	750	810	160	372	97	216	130	26	195	440	-	-	-	25.8
80	WUO-805-2.2T4-F	2.2	200	514	750	810	160	372	97	216	130	30	195	400	-	-	-	20	
	WUO-805-3.7T4-F	3.7	200	551	750	810	160	372	97	216	130	30	195	440	-	-	-	25.8	
Alternate, Alternate /Parallel	50	WUO-505-1.5T4L(LN)-F	1.5	200	497	600	660	137	362	87	191	120	26	195	577	255	517	637	16.5
	65	WUO-655-1.5T4L(LN)-F	1.5	200	497	600	660	137	362	87	191	120	26	195	577	255	517	637	16.5
		WUO-655-2.2T4L(LN)-F	2.2	200	549	750	810	160	372	97	216	130	26	195	727	255	647	787	21
		WUO-655-3.7T4L(LN)-F	3.7	200	586	750	810	160	372	97	216	130	26	195	727	255	647	787	26.8
	80	WUO-805-2.2T4L(LN)-F	2.2	200	549	750	810	160	372	97	216	130	30	195	727	255	647	787	21
	WUO-805-3.7T4L(LN)-F	3.7	200	586	750	810	160	372	97	216	130	30	195	727	255	647	787	26.8	

EXPECTED PERFORMANCE CURVE

MODEL : WUO-805-3.7T4-F

■ PERFORMANCE CURVES

